



MC-Montan Injekt LE

Subsoil stabilisation, load capacity raising
and structural lifting

EXPERTISE
INJECTION



MC-Montan Injekt LE

Injection system for foundation soil stabilisation and structural lifting

Sufficient load-bearing capacity of the subsoil is essential for safe construction. MC-Montan Injekt LE expansion resin compacts inadequate foundation soil to increase both its stability and its capacity. The system also enables better control and permanent rectification of structural settlement.

MC-Montan Injekt LE is injected into the ground via lances and spread under the pump pressure. Due to the extremely short reaction time of 10 to 15 seconds, the resin very quickly forms a sustainable foam mass.

Consolidation

During injection, MC-Montan Injekt LE penetrates and expands into cracks and cavities in the subsoil. The expansion of the resin and the resulting pressure also lead to densification of the surrounding soil.

Controlled structural lifting

Lifting will commence once the resulting pressure exceeds the passive earth pressure. Stopping the injection process immediately halts the lift. The final lift can be achieved by repeated injection. The process can be optimally monitored and controlled using laser measurement technology.

Wide range of applications

Subsoil injection with MC-Montan Injekt LE enables you to carefully and safely lift structural components while consolidating deeper ground strata. The scope of application extends from foundations in residential construction and industry to the stabilisation of dynamically stressed roads and general subsoil rehabilitation.

The benefits are there to be had:

■ **Minimally invasive**

No excavation work necessary; compact pumpsets

■ **High cost efficiency**

Short site times, immediate results

■ **Environmentally compatible**

Soil and groundwater neutral

■ **Enduring resilience**

Long service lifetimes; no degradation in the soil

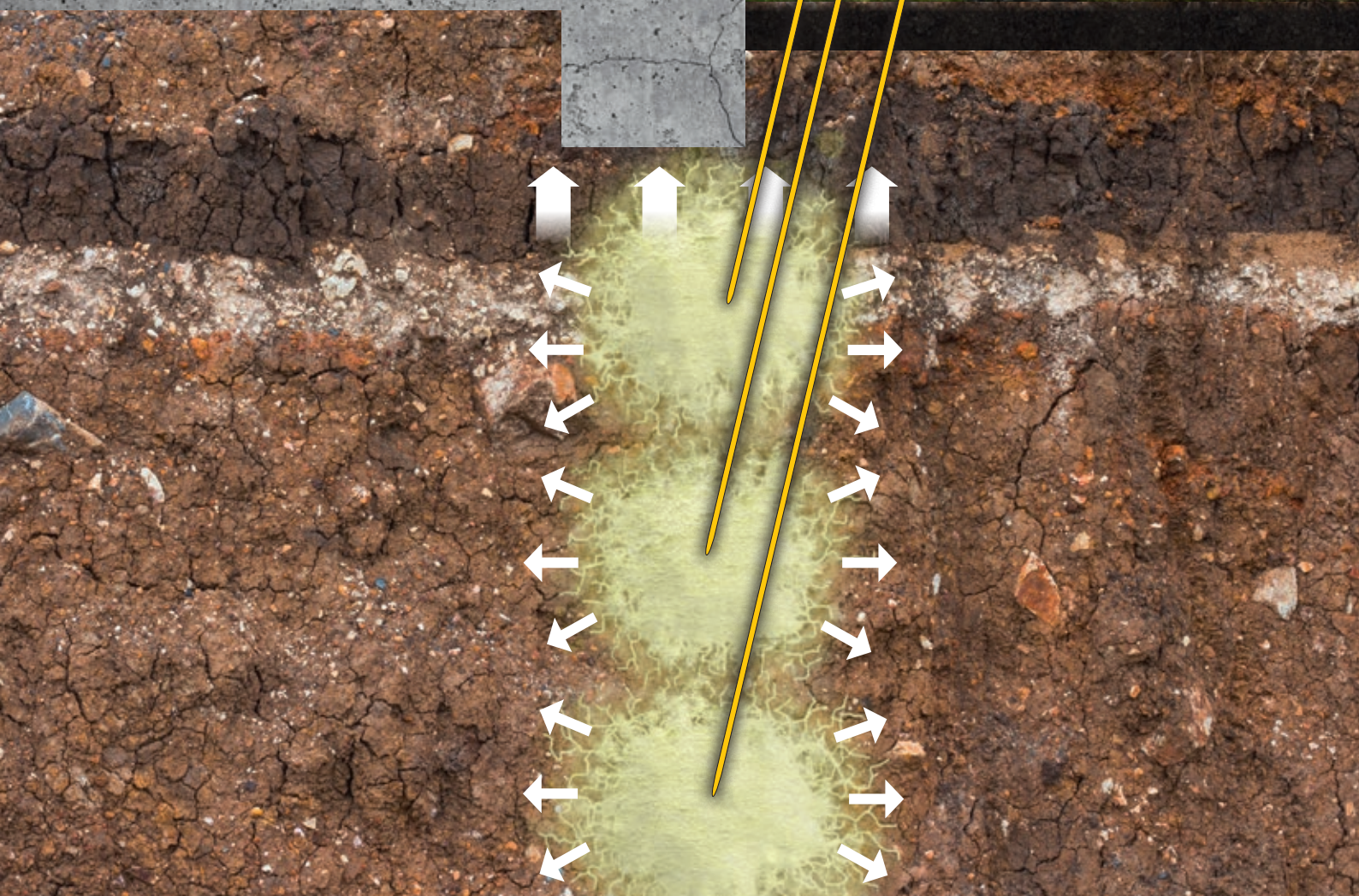
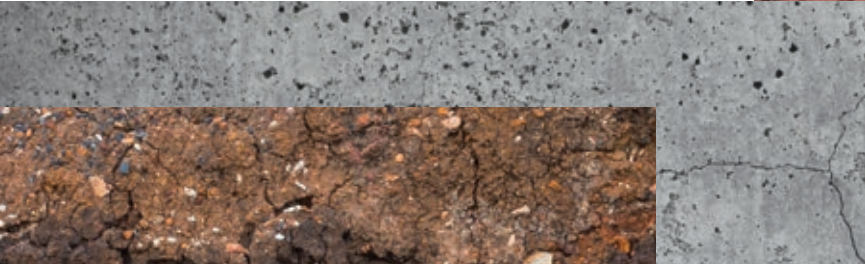


The injection process is permanently monitored using laser-based soil and structure control equipment.



Technical properties

- High expansion ratio (factor of 32 under conditions of free volume expansion)
- Cures in seconds, no secondary expansion
- High compressive stress
- Dimensionally stable
- High chemical resistance



MC-Montan Injekt LE For subsoil stabilisation, load capacity raising and structural lifting

- Subsoil consolidation
- Stabilisation of buildings,
roads and industrial floors
- Controlled structural lifting

Headquarter

MC-Bauchemie Müller GmbH & Co. KG
Infrastructure, Industry and Buildings
Am Kruppwald 1-8
46238 Bottrop
Germany

Regional Office

MC-Bauchemie Middle East L.L.C.
Jebel Ali Industrial 1, Dubai
United Arab Emirates
Phone: +971 4 880 4429
Fax: +971 4 880 4439
info.uae@mc-bauchemie.com
www.mc-bauchemie.ae



BE SURE. BUILD SURE.

Get straight to
the MC website:
www.mc-bauchemie.ae

